

Greiðslurokning várroynd 8.flokkur

1a

Ítróttarbuksurnar eru niðursettar: $390 - 260 =$ **130 kr**

1b

Tær eru niðursettar í prosent: $\frac{130 \cdot 100}{390} =$ **33,3%**

1c

Ítróttarfélagið fær fyrir 5000 kr: $\frac{5000}{260} \approx$ **19 pör**

1d

Fullur prísur $19 \cdot 390 =$ 7410 kr

Tilboðsprísur $19 \cdot 260 =$ 4940 kr

Sparing **2470 kr.**

2a

$$AB^2 = 24^2 + 12^2$$

$$AB^2 = 576 + 144$$

$$AB^2 = 720$$

$$AB = \sqrt{720}$$

$$\mathbf{AB = 26,8 m}$$

2b

$$\text{Vidd: } 20 \cdot 24 = 480 \text{ m}^2$$

$$\frac{\frac{12 \cdot 24}{2}}{2} = 144 \text{ m}^2$$

$$\text{Tilsamans } \mathbf{624 \text{ m}^2}$$

2c

$$\text{Prísur pr m}^2 \quad \frac{187200}{624} = \mathbf{300 \text{ kr}}$$

2d

$$\text{Hegn: } 20 + 24 + 32 + 26,8 = \mathbf{102,8 \text{ m}}$$

3a

$$\text{Rúmdin á bakkanum er: } 10 \cdot 20 \cdot 30 = \mathbf{6000 \text{ cm}^2}$$

Greiðslurokning várroynd 8.flokkur

$$\text{Bakkin tekur : } 6000 / 1000 = \quad \quad \quad \mathbf{6 \text{ litrar}}$$

3c

$$\text{Bakkin vigar fullur av vatni : } 6 + 0,5 = \quad \quad \quad \mathbf{6,5 \text{ kg}}$$

4a

$$\text{Strekkið} \quad = \text{ferð} * \text{tíð}$$

$$\text{Strekkið} \quad = 80 * 7,5$$

$$\text{Strekkið} \quad = \mathbf{600 \text{ km}}$$

4b

$$\text{Tíð} \quad = \frac{\text{strekkið}}{\text{ferð}}$$

$$\text{Tíð} \quad = \frac{250}{80}$$

$$\text{Tíð} \quad = 3,125 \text{ tímar} = 3 \text{ tímar } 7 \frac{1}{2} \text{ minuttir}$$

5a

$$4a + 4 - 3(a + 2)$$

$$4a + 4 - 3a - 6$$

$$\mathbf{a - 2}$$

5b

$$(y + 2)(y - 2) + 4$$

$$y^2 - 2y + 2y - 4 + 4$$

$$\mathbf{y^2}$$

6a

$$\text{Vinkul B} = 180 - 76 - 59 = 45^\circ$$

6b

$$\frac{c}{\sin C} = \frac{a}{\sin A}$$

$$\frac{c}{\sin 59} = \frac{7,1}{\sin 76}$$

$$c * \sin 76 = \sin 59 * 7,1$$

$$c = \frac{\sin 59 * 7,1}{\sin 76}$$

Greiðslurokning várroynd 8.flokkur

$$c \approx 6,3 \text{ cm}$$

7a

$$9 - 7x = 2$$

$$-7x = 2 - 9$$

$$-7x = -7$$

$$x = \frac{-7}{-7}$$

$$x = 1$$

7b

$$3x + 8 = -3x + 20$$

$$3x + 3x = 20 - 8$$

$$6x = 12$$

$$x = \frac{12}{6}$$

$$x = 2$$

7c

$$y = x + 4 \quad \text{og} \quad y = -\frac{1}{2}x + 1$$

$$x + 4 = -\frac{1}{2}x + 1$$

$$x + \frac{1}{2}x = 1 - 4$$

$$1\frac{1}{2}x = -3$$

$$x = \frac{-3}{1\frac{1}{2}}$$

$$x = -2$$

$$y = x + 4$$

$$y = -2 + 4$$

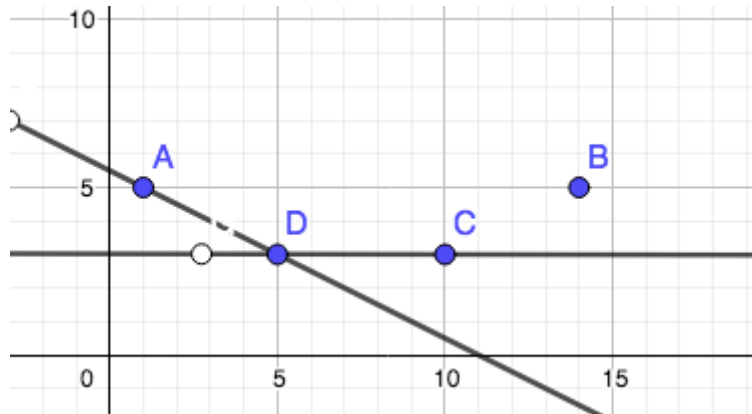
$$y = 2$$

$$(x, y) = (-2, 2)$$

Greiðslurokning várroynd 8.flokkur

8a

Sí tekning



8 b

$$y = ax + b$$

$$y = -\frac{1}{2}x + 5\frac{1}{2}$$

8c

Linjan, ið gongur ígjøgnum C og D er javnfjar við x ásin og gongur ígjøgnum (0,3)

Forskriftin er $y = 3$