

Nr:	Navn: MTI	Flokkur:
Skúli:		Umsjónarfólk:

Fráfaringarroynd fólkaskúlans

Mai 2007

Støddfrøði

**Fimis-
rokning**

1 tími

1 $283 + 356 = \underline{639}$

2 $546 - 263 = \underline{283}$

3 $122 \cdot 56 = \underline{6832}$

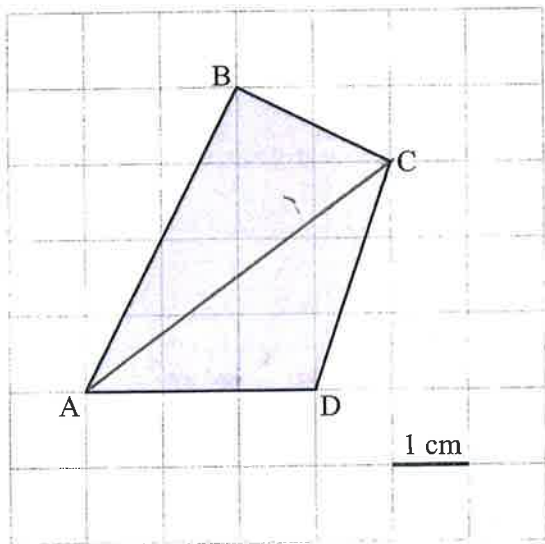
4 $1032 : 8 = \underline{129}$

5 15 kg av 75 kg = 20 %

6 20% av 200 kr = 40 kr

7 2 kg 22 g = 2,022 kg

8 42 cm = 4,2 dm



9 Víddin á ABCD er 9,5 cm²

10 Tekna eina hornalinju í ferhyrningin ABCD.

11 4,3 m = 430 cm

12 3,07 kg = 3070 g

13 2 dl = 20 cl

14 $5 \cdot 4 - 4 \cdot 3 = \underline{8}$

15 $2 + 2^3 = \underline{10}$

16 $\sqrt{9} \cdot 3 = \underline{9}$

Ger til desimaltal:

17 42% = 0,42

18 $\frac{1}{4} = \underline{0,25}$

19 112% = 1,12

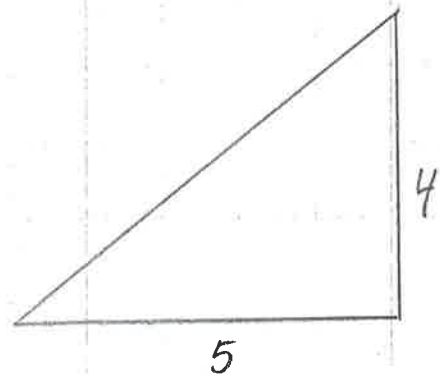
20 $2\frac{1}{5} + 7,8 = \underline{10}$

21 $\frac{3}{4}$ av 12 kg = 9 kg

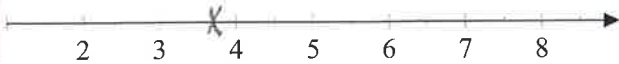
22 $3\frac{3}{4} : 5 = \underline{\frac{3}{4}}$

1 cm²

23 Tekna ein tríhyrning, sum hefur víddina 10 cm².



24 Set merki við $\sqrt{15}$ á tallinjuna:



25 Skriva talið, sum restar í, á strikuna:

1, 4, 8, 13, 19, 26, 34

Loys líkningarnar:

26 $2x + 5 = 9$

$x = \underline{2}$

Umstytt framsagnirnar:

28 $3a + 2b - 3a + 3 - 4b = \underline{3 - 2b}$

27 $-2x - 4 = -12$

$x = \underline{4}$

29 $2a + 2(2a - 4b) = \underline{6a - 8b}$

Ferðin 1 sjómíl er umleið 1,852 km/t.

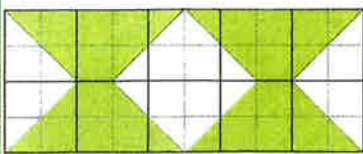
30 4 sjómíl eru umleið 7,4 km/t

32 Eina viku vórðu hesi hitastig mátað:

-2, 2, 5, 0, -3, 2 og 3.

31 9,26 km/t eru umleið 5 sjómíl

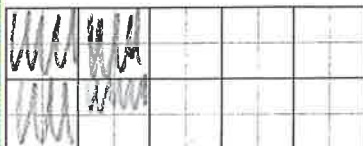
Miðalhitin hesa vikuna var 1 °



33 Hvussu nógv prosent av skapinum er grønt?
60 %

35 $a = -2$ og $b = 4$

$-5a - 2b = \underline{2}$



34 Lita 35% av skapinum.

36 Set tað rætta av teknunum $<$, $>$ ella $=$

ímillum brotini: $\frac{2}{3} < \frac{3}{4}$

37 3,8 tímar = 3 tím 48 min

38 $60 \cdot 0,6 = \underline{36}$

39 $8,87 - 0,6 = \underline{8,27}$

40 $\frac{5 \cdot 8 \cdot 3}{4 \cdot 2} = \underline{15}$

Runda til heilt tal:

41 $25,52 \approx \underline{26}$

43 Hverji av tölunum $-1, 0, 1, 2, 3, 4$ og 5 eru loysn í ólíkningini:

42 $14\frac{3}{5} \approx \underline{15}$

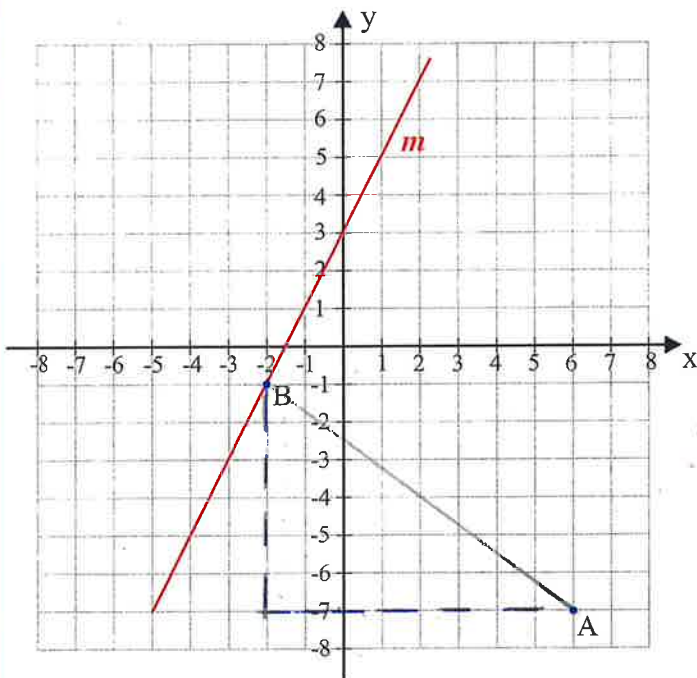
$3x - 3 > 6$ 4 og 5

44 $4,63 \cdot 10^3 = \underline{4630}$

46 Hvussu nógv prosent eru 20 kr minni enn

45 $23 : 1000 = \underline{0,023}$

25 kr? 20 %



47 Linjan *m* hefur halltalið 2

48 Punktið B hefur krosstøluni (-2, -1)

49 Rokna longdina úr A í B 10 eindir

$$AB^2 = 8^2 + 6^2$$

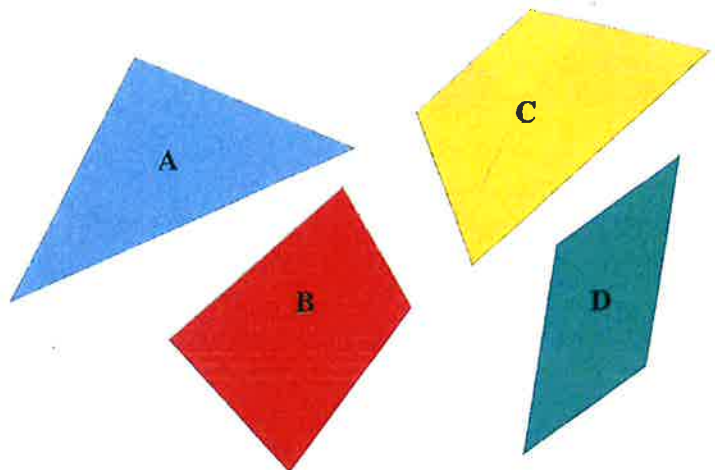
$$AB^2 = 64 + 36$$

$$AB^2 = 100$$

$$AB = \sqrt{100}$$

$$AB = 10$$

50 Hvat skap hørgrumegin er eitt trapets? C



Tvøt sidur javnfjarat,
Hinar báðar ikki.